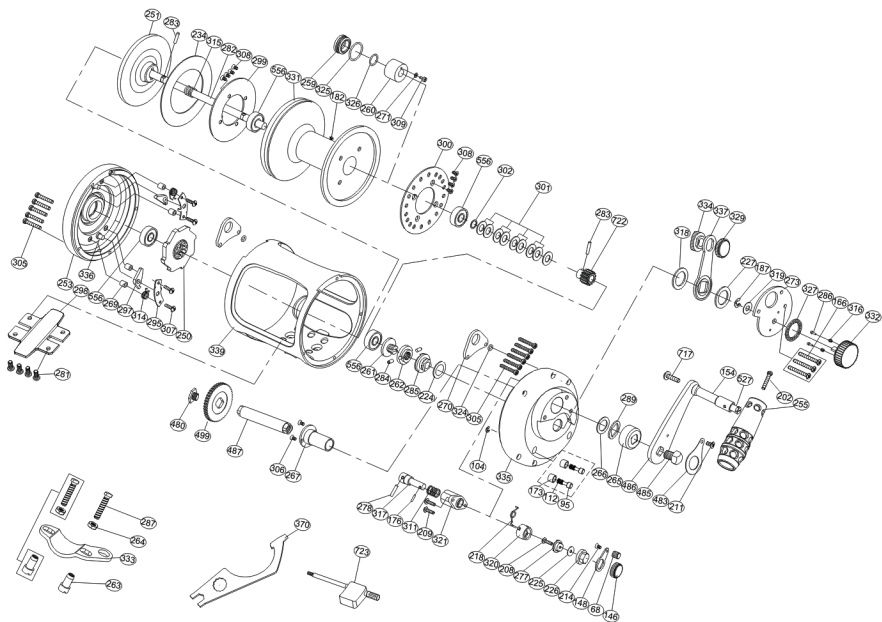


maxel

SEAEAGLE One Speed

OSE50W



No.	PARTSNAME	No.	PARTSNAME	No.	PARTSNAME
10	Handle shaft retainer	266	Drive shaft washer	317	Alarm hammer
95	Limited nail	267	Drive shaft cover	318	Dragcontrol lever thrust ring
112	Limited spring	269	Plate support	319	Dial washer
146	Alarm lever cap	270	Harness lugs	320	Alarm limited coat
148	Alarm lever slice	271	Piston sealing washer	321	Alarm lever base
154	Handle shaft coat	273	Leverhub cover	322	Various speed washer
166	Fixedplatescrew	277	Crosspin support	324	Rubber ring
173	Limited bushing	278	Alarm crosspinsupport	325	Piston big ring
176	Alarm crosspin support	280	Stopping bracket pin	326	Piston small washer
182	Spool nail	281	Reel foot screws	327	Sound silce
187	"E" washer	282	Spool shaft	331	Spool
202	Handle knob screw	283	Gear shaft pin	332	Drag tension knob
208	Crosspin fixed screw	284	Pre-programkey pin	333	Rod clamp
209	Alarm lever screw	285	Eccentric	334	Drag control lever
214	Push slice screw	286	Soundnail	335	Right side cover
218	Alarm lever spring	287	Fixed screw	336	Left side plate
223	Drag control lever washer(B)	289	Thrust washer	337	Drag lever arm
224	Pre-program plate washer	296	Stopping bracket	339	Frame
225	Spacer	297	Anti reverse dog	370	Wrench B
227	Drag lever washer	298	Reel foot	480	Drive shaft screw
234	Drag washer	299	Friction washer	483	Stopping slice
236	Alarm support	300	Alarm sound slice	485	Handle bolt
239	Drag control lever cap	301	Spool spring washer	486	Handle arm
250	Anti-reverse ratchet	302	Spool washer	487	Drive shaft
251	Pressure plate	305	Side plate screws	499	Drive gear-high speed
255	Handle knob	306	Shaft screw	527	T handlenail
259	Piston cover	307	Stopping bracket screw	529	Handle shaft coat washer
260	Piston button	308	Push slice screw	556	Ball bearing
261	Pre-program screw	309	Piston screw	717	Handle shaft fixed screw
262	Pre-program key	311	Alarm spring	722	High speed pinion gear
263	Fixed nuts- L	314	Stoppinglockspring	723	Wrench A
264	Fixed nuts	315	Spool shaft spring		
265	Drive shield	316	Soundnailspring		